

LOCAL 70 COMMERCIAL PARCELS

PARCEL 1: 12.6 ACRES

PARCEL 2: 33.5 ACRES

PARCEL 3: 5.8 ACRES

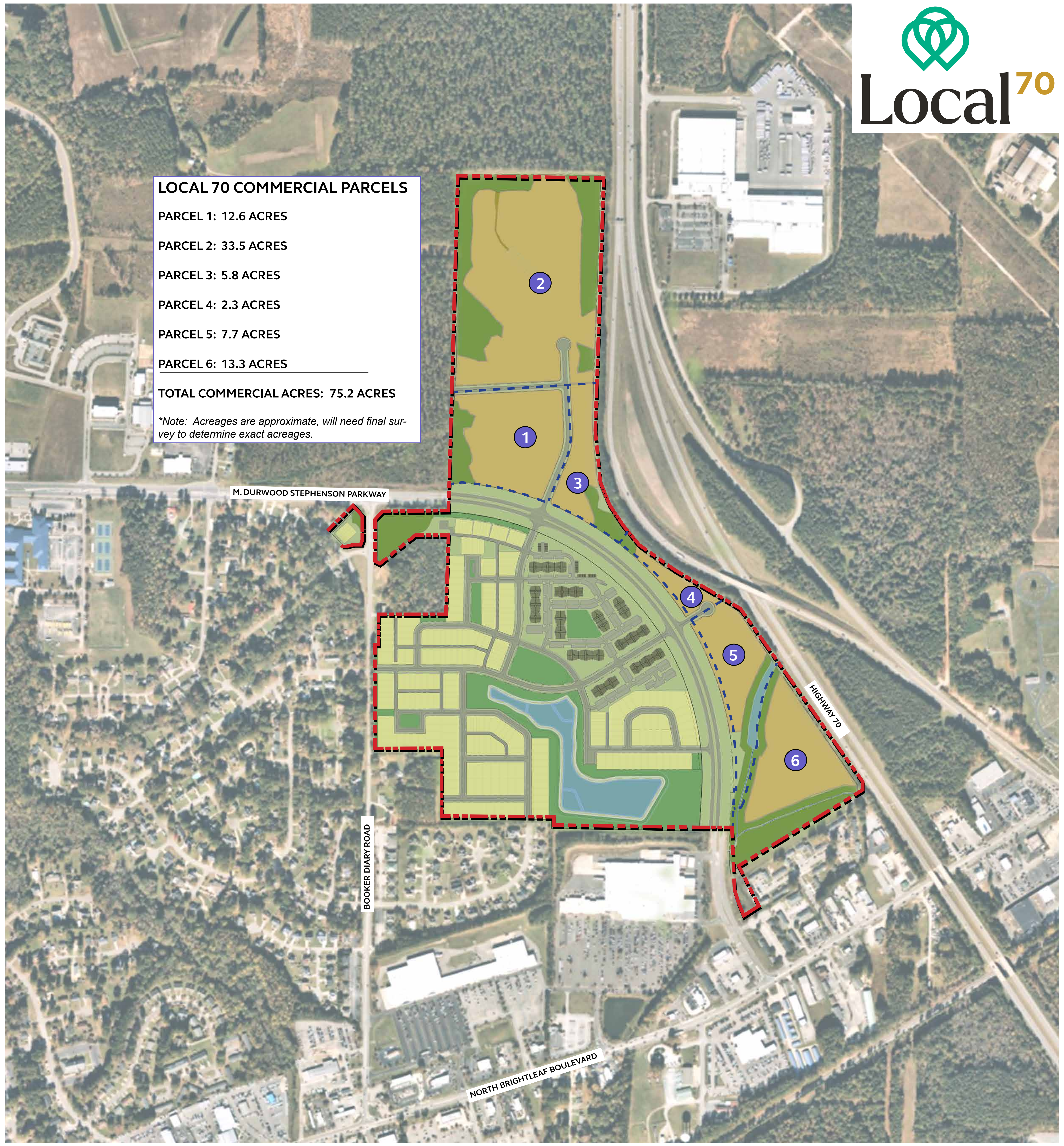
PARCEL 4: 2.3 ACRES

PARCEL 5: 7.7 ACRES

PARCEL 6: 13.3 ACRES

TOTAL COMMERCIAL ACRES: 75.2 ACRES

**Note: Acreages are approximate, will need final survey to determine exact acreages.*



M. DURWOOD STEPHENSON PARKWAY

BOOKER DIARY ROAD

NORTH BRIGHTLEAF BOULEVARD

HIGHWAY 70